

Tables and charts

Tables and charts are generally based on statistical information available on 16 May 2014. A list of symbols is on p. 2.

A Tables

- 80 Table 1 Main monthly indicators
- 82 Table 2 Historical economic indicators

B Charts

- 84 Chart 1 Consumer price inflation 1940-2013
- 84 Chart 2 Output growth 1945-2013
- 84 Chart 3 Growth of GDP, private consumption, and gross fixed capital formation 1980-2013
- 84 Chart 4 Private consumption, public consumption, and gross fixed capital formation 1980-2013
- 84 Chart 5 Output growth Q1/1998 - Q4/2013
- 84 Chart 6 Components of economic growth Q1/1998 - Q4/2013
- 85 Chart 7 Gross national saving and fixed capital formation 1960-2013
- 85 Chart 8 Current account balance 1945-2013
- 85 Chart 9 Goods trade January 1996 - March 2014
- 85 Chart 10 Exports and imports of services Q1/1996 - Q4/2013
- 85 Chart 11 External debt and assets Q1/1998 - Q4/2013
- 85 Chart 12 Net external debt position 1980-2013
- 86 Chart 13 Real effective exchange rate of the Icelandic króna 1960-2013
- 86 Chart 14 General government revenues and expenditures 1978-2013
- 86 Chart 15 Treasury borrowing and credit budget balance 1990-2012
- 86 Chart 16 General government balance and debt 1980-2013
- 86 Chart 17 Household debt as percentage of disposable income 1980-2012
- 86 Chart 18 Real wages January 1990 - March 2014
- 87 Chart 19 Unemployment and labour participation January 1996 - March 2014
- 87 Chart 20 Short-term interest rates March 1998 - April 2014
- 87 Chart 21 Long-term interest rates January 1997 - April 2014
- 87 Chart 22 Real yield and broad money 1960-2013
- 87 Chart 23 M3, DMB lending, and base money January 1997 - March 2014
- 87 Chart 24 Deposit money bank lending by sector January 1998 - March 2014
- 88 Chart 25 Growth of credit system lending Q1/1994 - Q3/2008
- 88 Chart 26 Credit system domestic liabilities at year-end 1990-2007
- 88 Chart 27 Reserve assets and Central Bank net external position Q1/1996 - Q1/2014

Table 1 Main monthly indicators

	Consumer prices % change in CPI over the previous		Exchange rate % ch. in effective exchange rate ^{1,2}		Yield (end of period, %)				Money and credit (end of period) ⁶				
	1 month	12 months	1 month	12 months	Money market CB	3-month REIBOR ⁴	RIKB 13 0517	RIKB 19 0226	HFF 150644	Base money	M3	DMB lending	DMB foreign liabilities ⁷
2012													
January	0.3	6.5	-1.2	-3.7	4.8	4.8	3.7	6.4	2.6	-5.6	12.7	0.2	-27.4
February	1.0	6.3	-1.9	-4.0	4.8	4.8	4.1	6.8	2.5	18.7	12.1	1.0	-23.2
March	1.0	6.4	-2.0	-5.3	5.0	5.1	4.4	6.9	2.7	10.0	7.8	4.2	-16.4
April	0.8	6.4	-0.2	-5.3	5.0	5.1	4.1	7.0	2.6	-7.6	9.2	5.9	-14.1
May	0.0	5.4	2.1	-2.2	5.5	5.6	3.8	6.6	2.8	17.5	10.7	7.7	-22.5
June	0.5	5.4	1.5	-0.2	5.8	5.7	2.7	6.6	2.8	5.4	8.3	6.0	-24.9
July	-0.7	4.6	2.2	2.4	5.8	5.8	3.1	6.3	2.8	-22.9	4.3	5.5	-28.7
August	-0.2	4.1	3.7	5.4	5.8	5.8	2.8	6.2	2.5	20.6	3.1	5.9	-14.3
September	0.8	4.3	-4.6	-1.0	5.8	5.8	3.1	6.3	2.5	-0.7	-1.5	6.7	-19.1
October	0.3	4.2	-1.5	-3.6	5.8	6.1	3.0	6.0	2.5	8.6	-0.4	6.3	-19.0
November	0.3	4.5	-1.6	-4.9	6.0	6.1	3.5	6.0	2.8	0.0	-1.6	5.4	-17.1
December	0.0	4.2	-0.8	-4.6	6.0	6.2	3.8	6.1	2.7	32.0	-2.7	1.8	-22.3
2013													
January	0.3	4.2	-2.5	-5.9	6.0	6.2	5.3	5.3	2.5	15.8	-8.0	0.9	-16.3
February	1.6	4.8	0.8	-3.3	6.0	6.2	5.6	5.4	2.6	-33.0	-5.7	-0.5	-18.3
March	0.2	3.9	4.3	3.0	6.0	6.2	5.7	5.7	2.7	1.7	-9.0	-0.2	-20.4
April	0.2	3.3	5.2	8.6	6.0	6.2	5.8	5.5	2.8	-7.9	-12.0	-1.9	-19.6
May	0.0	3.3	-1.5	4.8	6.0	6.2	.	5.4	2.7	0.9	-5.7	-1.8	5.4
June	0.5	3.3	-1.3	1.9	6.0	6.2	.	5.5	2.9	9.8	-2.2	-1.2	-1.6
July	-0.3	3.8	0.4	0.1	6.0	6.2	.	5.6	2.7	12.4	-1.9	-0.3	3.7
August	0.3	4.3	1.1	-2.3	6.0	6.2	.	5.8	2.6	-14.3	-0.2	-0.4	-8.4
September	0.3	3.9	-1.6	0.8	6.0	6.2	.	5.8	2.7	4.2	1.5	0.8	0.1
October	0.0	3.6	-1.3	1.0	6.0	6.2	.	5.6	2.8	5.4	0.9	0.7	2.8
November	0.4	3.7	0.4	3.0	6.0	6.2	.	6.0	3.0	8.7	1.3	0.8	8.9
December	0.5	4.2	2.7	6.7	6.0	6.2	.	6.1	3.1	0.3	1.3	0.8	20.2
2014													
January	-0.7	3.1	1.7	11.3	6.0	6.2	.	6.1	3.1	13.5	9.6	2.2	21.2
February	0.7	2.1	1.3	11.9	6.0	6.2	.	6.5	3.2	22.1	5.9	2.7	21.9
March	0.2	2.2	0.2	7.5	6.0	6.1	.	6.1	3.4	-6.5	8.1	3.7	20.2
April	0.3	2.3	0.4	2.5	6.0	6.1	.	6.0	3.2	11.5

1. Percentage change between period averages. 2. Based on the narrow trade-weighted effective exchange rate basket. A positive sign indicates appreciation of the Icelandic króna. 3. From June 2007, the presentation of the policy rate has been changed. It is now presented as a nominal rate instead of a yield. 4. Average yield on the interbank market in Icelandic krónur. 5. For Treasury bonds and HFF bonds, the quoted yield is in excess of changes in the CPI. Trading with HFF bonds began in July 2004; prior figures are for housing bonds. 6. Annual figures are changes over one year. Domestic borrowers only. Latest figures are preliminary. 7. DMBs = deposit money banks = commercial and savings banks and other institutions permitted to accept deposits from the public. Since July 2007, derivatives have been considered foreign liabilities and the presentation of Central Banks' short-term position has been changed.

Table 1 (continued) Main monthly indicators

2012	Foreign exchange market and reserves				Foreign trade and external conditions					Labour market		Public finance		
	Gross foreign currency reserves		CB		Goods		Marine		Real		Reg. Treasury financial		Asset prices	
	Position (B.kr.)	as ratio of: Goods imports ⁸	For short-term liabil. ⁹ (b.kr.)	net purchases (b.kr.)	Goods exports, fob (b.kr.)	Goods imports, fob (b.kr.)	Goods product prices 12-mo.% ch. ¹⁰	exchange rate of króna ¹¹	Un-employment	Wages, 12-mo. % change	balance, % of reg. revenues, from Jan. ¹²	Equity prices ¹³	12-mo. % changes	Housing prices ¹⁴
January	1,081.1	23.4	7.6	1.2	47.3	46.8	0.7	75.3	7.2	9.1	-38.1	-5.0	9.2	
February	1,095.0	23.1	7.6	1.0	54.2	41.6	-2.5	74.2	7.3	11.3	6.1	-2.5	7.8	
March	976.8	20.3	6.3	-1.0	55.4	50.3	0.0	72.9	7.1	12.1	-4.5	4.1	8.7	
April	942.2	19.7	6.0	1.0	49.5	40.7	0.8	73.0	6.5	11.9	-3.4	8.6	7.7	
May	1,062.8	21.8	7.9	1.2	55.4	57.4	0.1	74.7	5.6	11.0	-6.2	8.1	5.3	
June	851.6	17.9	6.4	1.0	52.4	52.2	0.7	76.3	4.8	6.9	-7.1	11.1	6.3	
July	829.6	18.0	6.3	2.9	47.3	46.9	0.7	77.6	4.7	6.0	-9.8	1.9	7.3	
August	786.2	17.0	5.6	1.8	51.9	38.9	0.4	80.1	4.8	5.9	-9.3	7.0	6.7	
September	532.5	11.2	4.0	1.9	55.3	46.5	-1.7	76.6	4.9	5.7	-10.9	12.1	6.0	
October	547.8	11.2	4.3	3.2	63.1	48.0	-0.9	75.4	5.2	5.1	-8.8	6.6	5.9	
November	527.1	11.0	4.2	2.0	54.6	45.3	-0.8	74.6	5.4	5.0	-11.2	12.6	6.3	
December	539.7	11.3	4.5	1.0	45.0	41.5	-0.9	73.8	5.7	4.7	-8.3	16.5	5.8	
2013														
January	532.3	11.3	4.4	-2.1	55.7	45.3	-1.7	72.7	5.5	5.0	-40.3	22.6	5.3	
February	514.6	11.2	4.3	-3.1	49.6	43.8	-2.1	74.0	5.5	5.2	4.3	23.8	5.8	
March	505.3	11.4	4.6	-1.0	50.9	41.7	0.7	77.2	5.3	5.5	-6.1	16.5	4.6	
April	479.9	11.2	4.2	0.0	51.5	47.9	0.6	81.0	4.9	5.8	-1.9	8.6	5.5	
May	490.3	11.1	3.7	-1.0	43.5	50.1	0.2	79.7	4.3	5.5	-7.6	5.2	6.5	
June	486.3	11.0	4.1	0.0	44.5	43.5	-0.4	79.1	3.9	5.7	-6.6	6.4	6.9	
July	474.6	11.0	3.9	1.4	45	49.3	0.3	79.3	3.9	5.5	-7.4	17.5	6.7	
August	471.8	10.8	4.0	0.5	53.8	49.3	0.3	80.4	4.0	5.7	-6.2	16.4	6.8	
September	478.2	10.7	4.0	-0.5	55.5	46.7	-0.1	79.2	3.8	5.9	-7.9	14.0	7.0	
October	484.2	10.8	4.1	0.5	55.0	46.9	-0.9	78.1	3.9	6.0	-3.7	21.7	7.9	
November	496.6	11.2	4.0	1.0	55.2	43.8	1.0	78.7	4.1	6.1	-6.8	22.1	7.8	
December	487.4	11.3	4.0	5.3	45.7	41.2	0.1	81.1	4.2	6.0	-5.0	18.9	6.8	
2014														
January	502.6	11.6	4.0	10.6	48.0	40.8	-1.3	82.5	4.5	6.7	-24.8	9.4	7.4	
February	495.5	11.7	3.9	10.8	43.1	40.5	0.0	83.8	4.5	4.7	5.5	-0.5	8.7	
March	468.2	10.9	3.7	2.8	45.2	45.8	1.7	83.7	4.5	4.4	5.8	-4.1	11.1	
April	468.3	10.9	...	0.5

8. Gross foreign exchange reserves at end of period as a ratio of the 12-month average of goods imports. Calculated at fixed exchange rates SDR. 9. The denominator is foreign short-term liabilities of credit institutions and investment banks and includes derivatives as of July 2007. 10. Foreign currency prices of marine products are calculated by dividing marine products prices in Icelandic krónur by the export-weighted trade basket. Annual figures are % changes between annual averages. 11. Real effective exchange rate of the Icelandic króna based on relative consumer prices (a trade-weighted average of 17 trading partner countries' consumer prices is used), 2000 = 100. Average over periods. 12. Cash basis. Without privatisation revenues. 13. OMXI6 index. 14. Residential housing in greater Reykjavík area (7 municipalities). Annual figures are % changes over year.

Sources: Statistics Iceland, Directorate of Labour, State Accounting Office, Nasdaq OMX Iceland, Registers Iceland, Central Bank of Iceland.

Table 2 Historical economic indicators

	Consumer prices ¹		Exchange rate		Interest rates (%)		Money and credit		Ratio of		Growth of real GDP (%)			
	Consumer price index	CPI inflation (%)	Trade weighted exch. rate ²	Real exchange rate ³		Indexed gov. bonds, yield ⁴	Banks' secured lending (real yield)		DMB lending	Credit system lending		FX reserves to goods imports ⁵	Net ext. debt ⁶ GDP (%)	
				Relative CPI	Relative ULC		Non-indexed	Indexed						% change over year
1985	57.9	32.4	148.7	94.8	92.9	6.9	-2.3	5.0	47.6	29.7	35.2	2.8	63.6	3.3
1986	70.2	21.3	171.0	97.1	93.8	8.5	4.3	5.2	35.0	19.1	20.1	3.6	56.5	6.3
1987	83.4	18.8	177.3	106.0	120.4	8.7	4.7	7.7	35.2	42.1	31.4	2.4	49.4	8.5
1988	104.6	25.4	202.6	111.4	126.1	8.7	11.8	9.2	24.0	37.2	34.0	2.4	51.3	-0.1
1989	126.7	21.1	254.7	102.4	110.5	7.4	6.5	7.8	27.2	25.2	33.8	3.0	56.8	0.3
1990	145.5	14.8	283.7	99.1	99.6	7.0	9.3	8.0	14.9	11.0	12.5	3.3	43.8	1.2
1991	155.4	6.8	283.6	101.7	101.9	8.1	10.0	9.2	14.4	11.6	15.4	3.2	44.9	-0.2
1992	161.2	3.7	285.0	101.7	103.2	7.4	11.8	9.3	3.8	5.3	11.8	4.0	53.0	-3.4
1993	167.8	4.1	308.8	96.2	94.7	6.7	11.5	9.1	6.5	5.0	11.1	4.3	58.9	1.3
1994	170.3	1.5	324.8	91.0	83.2	5.0	9.5	7.9	2.3	-1.3	4.5	2.6	53.3	3.6
1995	173.2	1.7	322.3	91.1	88.6	5.6	10.1	8.7	2.2	-8.5	5.9	2.4	52.0	0.1
1996	177.1	2.3	322.9	91.3	88.5	5.5	10.5	8.9	6.8	11.5	9.3	3.0	49.8	4.8
1997	180.3	1.8	318.7	92.2	89.7	5.3	11.1	9.0	8.7	12.4	11.8	2.6	51.3	4.9
1998	183.3	1.7	313.6	93.8	93.7	4.7	11.8	8.8	15.1	30.0	15.1	2.2	57.4	6.3
1999	189.6	3.4	313.1	96.3	97.6	4.4	8.0	8.6	17.1	23.1	17.3	2.5	66.9	4.1
2000	199.1	5.0	313.3	100.0	100.0	5.1	12.7	9.5	11.2	50.1	17.2	2.1	93.8	4.3
2001	212.4	6.7	376.3	87.3	87.1	5.1	9.4	10.2	14.9	12.6	19.2	2.1	101.8	3.9
2002	222.5	4.8	365.2	91.7	90.2	5.2	13.7	10.1	15.3	2.7	3.2	2.5	89.3	0.1
2003	227.3	2.2	343.3	96.0	95.8	4.4	9.4	9.1	17.5	18.3	11.4	3.5	93.9	2.4
2004	234.6	3.2	336.3	98.1	92.3	3.9	8.3	8.0	15.0	39.0	19.9	3.6	112.3	7.8
2005	244.1	4.0	301.8	111.4	105.2	3.7	10.7	7.2	23.2	50.6	31.1	2.9	152.1	7.2
2006	260.6	6.8	337.2	104.2	103.0	4.6	10.9	7.1	19.6	41.5	31.0	4.8	193.1	4.7
2007	273.7	5.0	329.1	108.6	111.4	6.0	14.2	8.9	56.6	30.8	22.7	4.9	222.8	6.0
2008	307.7	12.4	462.1	85.5	84.7	4.6	7.9	10.1	32.1	-27.8	...	7.7	746.9	1.2
2009	344.6	12.0	622.3	70.0	61.6	4.4	4.2	8.0	-1.1	-15.5	...	13.8	769.0	-6.6
2010	363.2	5.4	604.0	74.4	69.9	3.4	4.9	6.4	-9.9	-0.2	...	18.9	669.7	-4.1
2011	377.7	4.0	598.1	75.2	72.3	2.2	3.7	6.1	8.7	-0.8	...	23.4	468.0	2.7
2012	397.3	5.2	600.1	75.8	73.3	2.2	3.0	5.8	-2.8	1.4	...	11.3	555.0	1.4
2013	412.7	3.9	607.5	75.9	70.7	...	4.3	5.3	2.7	2.3	...	11.3	468.0	3.3

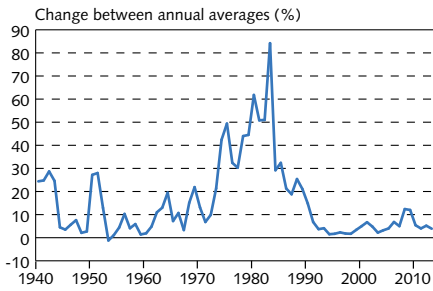
1. Annual averages (May 1988=100) and changes between annual averages. 2. Annual averages. Exchange rate of the króna against trade-weighted average of foreign currencies. 1983=100. 3. 2000=100. ULC=unit labour costs. 4. Annual average yield of indexed Treasury bonds of all maturities. Yields on Iceland Stock Exchange (Nasdaq OMX Iceland) from 1987. Before that, primary market yields. 5. Gross foreign exchange reserves at end of period as a ratio of the average monthly value of goods imports in the last 12 months. Calculated at fixed exchange rate of SDR. 6. External debt ratio is based on end-of-period balance as a percentage of GDP at current exchange rate.

Table 2 (continued) Historical economic indicators

	Components of GDP				External trade			General government (% of GDP) ⁷			Labour market (% of labour force)		Wages (% change from previous year)	
	(% change from previous year)		(% change from previous year)		(% change from previous year)		Revenues	Expenditures	Unemployment	Labour participation ⁸	Real wages ⁹	Real disp. income		
	Private consumption	Gross fixed cap. formation	National expenditure	Goods & services (volume changes)	Exports	Imports							Financial balance	
1985	4.2	1.0	2.7	11.1	9.4	-0.9	-3.8	37.0	0.9	79.3	1.2	10.8		
1986	6.9	-1.6	4.5	5.9	0.9	5.4	0.7	39.4	0.7	80.9	5.7	9.5		
1987	16.2	18.8	15.7	3.3	23.3	4.3	-3.3	36.5	0.4	84.1	9.0	25.8		
1988	-3.8	-0.2	-0.6	-3.6	-4.6	-0.8	-3.4	41.5	0.6	80.1	2.2	-1.9		
1989	-4.2	-7.9	-4.4	2.9	-10.3	-3.9	-1.3	43.0	1.7	78.7	-9.1	-8.9		
1990	0.5	3.0	1.5	0.0	1.0	0.3	-2.1	41.4	1.8	77.5	-4.9	-3.9		
1991	3.0	2.6	3.5	-5.9	5.3	3.5	-4.0	42.7	1.5	81.0	1.4	3.1		
1992	-3.2	-10.4	-4.6	-2.0	-6.0	-0.6	-2.4	43.6	3.1	81.8	-0.8	-2.8		
1993	-4.6	-9.8	-2.9	6.5	-7.5	-3.6	0.7	43.4	4.4	81.1	-2.6	-2.0		
1994	2.9	-0.2	1.8	9.3	3.8	0.3	1.9	43.2	4.8	81.3	-0.3	2.5		
1995	2.2	-1.7	2.2	-2.3	3.6	1.0	0.7	42.5	5.0	82.9	2.8	2.7		
1996	5.7	25.0	6.8	9.9	16.5	-3.1	-1.8	42.0	4.4	81.6	4.0	4.2		
1997	6.3	9.3	5.8	5.6	8.0	1.9	-1.8	40.5	3.9	81.0	3.6	7.3		
1998	10.2	34.4	13.8	2.5	23.4	5.3	-6.8	41.2	2.8	82.3	7.6	8.8		
1999	7.9	-4.1	4.2	4.0	4.4	-0.7	-6.8	41.9	1.9	83.2	3.3	6.3		
2000	4.2	11.8	5.9	4.2	8.6	-2.4	-10.2	41.8	1.3	83.5	1.6	8.2		
2001	-2.8	-4.3	-2.1	7.4	-9.1	0.4	-4.3	42.5	1.4	83.6	2.0	-3.0		
2002	-1.5	-14.0	-2.3	3.8	-2.6	0.5	1.5	44.1	2.5	82.8	2.3	5.0		
2003	6.2	11.1	5.8	1.6	10.7	-4.0	-4.8	45.5	3.4	82.1	3.4	3.8		
2004	7.0	28.7	10.1	8.4	14.5	-1.2	-9.8	44.0	3.1	80.7	1.4	7.5		
2005	12.7	34.4	15.4	7.5	29.3	1.0	-16.0	42.2	2.1	81.9	2.6	11.2		
2006	3.6	24.4	9.9	-4.6	11.3	3.3	-24.3	41.6	1.2	83.1	2.6	8.4		
2007	5.7	-12.2	-0.4	17.7	-1.5	0.1	-15.9	42.3	1.0	83.3	3.8	10.6		
2008	-7.8	-20.4	-8.6	7.0	-18.4	-6.1	-24.6	57.7	1.6	82.6	-3.8	0.3		
2009	-14.9	-51.4	-20.4	7.0	-24.0	-9.8	-11.5	51.0	8.0	80.9	-7.2	-17.5		
2010	0.0	-9.4	-2.7	0.5	4.5	6.0	-8.0	51.6	8.1	81.1	-0.6	-11.7		
2011	2.6	14.3	4.1	3.8	6.7	-1.7	-6.2	47.4	7.4	80.4	2.7	5.3		
2012	2.7	5.0	1.9	3.8	4.7	-3.5	-4.9	47.4	5.8	80.5	2.5	-0.6		
2013	1.2	-3.4	0.1	5.3	-0.1	-2.4	3.9	46.2	4.4	81.4	1.7	1.0		

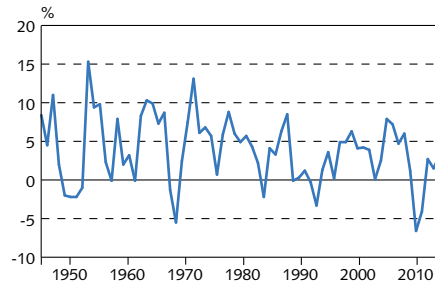
7. Central and local governments and the social security system. 8. Participation rate as per National Economic Institute definition until 1990, but based on Statistics Iceland labour market survey from 1991. 9. Statistics Iceland wage index. Deflated by consumer prices. Sources: Directorate of Labour, Ministry of Finance and Economic Affairs, Statistics Iceland, Nasdaq OMX Iceland, Central Bank of Iceland.

Chart 1
Consumer price inflation 1940-2013
 Yearly averages of CPI



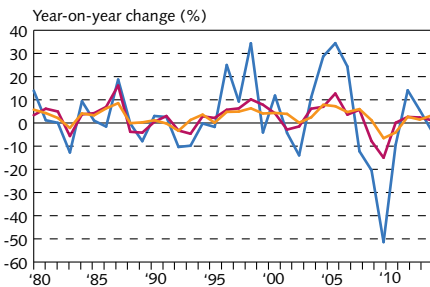
Source: Statistics Iceland.

Chart 2
Output growth 1945-2013¹
 Change in real GDP between years



1. Preliminary 2013.
 Source: Statistics Iceland.

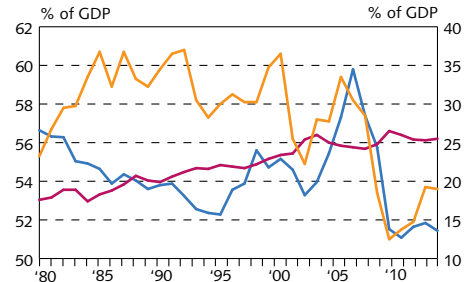
Chart 3
Growth of GDP, private consumption, and gross fixed capital formation 1980-2013¹



— Gross fixed capital formation
 — Private consumption
 — GDP

1. Preliminary 2013.
 Source: Statistics Iceland.

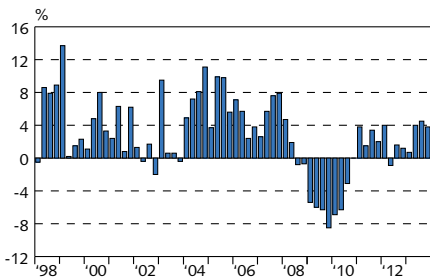
Chart 4
Private consumption, public consumption, and gross fixed capital formation 1980-2013¹



— Gross fixed capital formation (right)
 — Public consumption (right)
 — Private consumption (left)

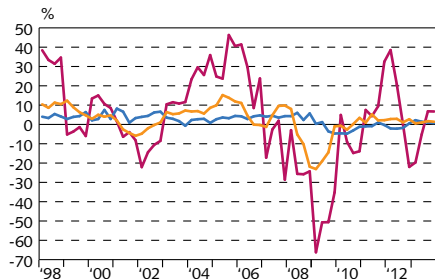
1. Preliminary 2013.
 Source: Statistics Iceland.

Chart 5
Output growth Q1/1998 - Q4/2013¹
 Year-on-year change



1. Latest data are preliminary.
 Source: Statistics Iceland.

Chart 6
Components of economic growth Q1/1998 - Q4/2013¹
 Year-on-year change



— Public consumption
 — Gross fixed capital formation
 — Private consumption

1. Latest data are preliminary.
 Source: Statistics Iceland.

Chart 7
Gross national saving and fixed capital formation 1960-2013¹

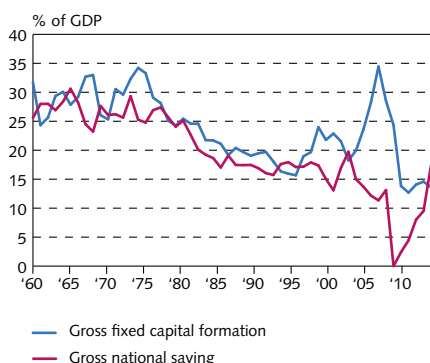


Chart 8
Current account balance 1945-2013¹

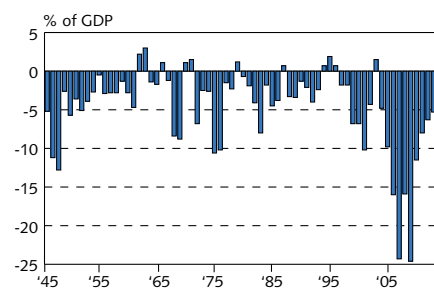


Chart 9
Goods trade January 1996 - March 2014
3-month moving averages at constant exchange rates

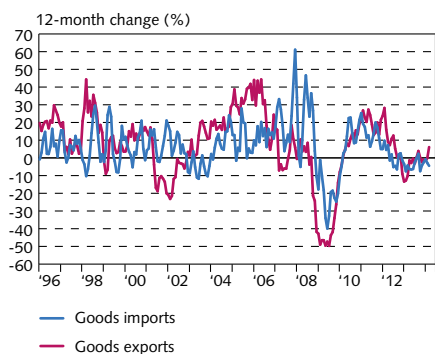


Chart 10
Exports and imports of services
Q1/1996- Q4/2013¹
At constant exchange rates

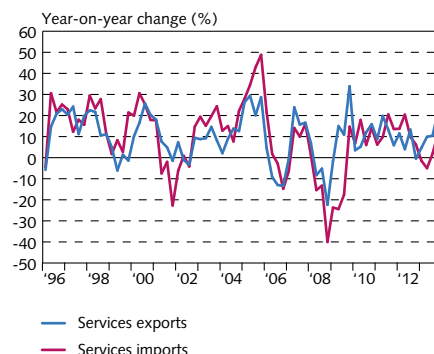


Chart 11
External debt and assets Q1/1998 - Q4/2013¹
At current prices

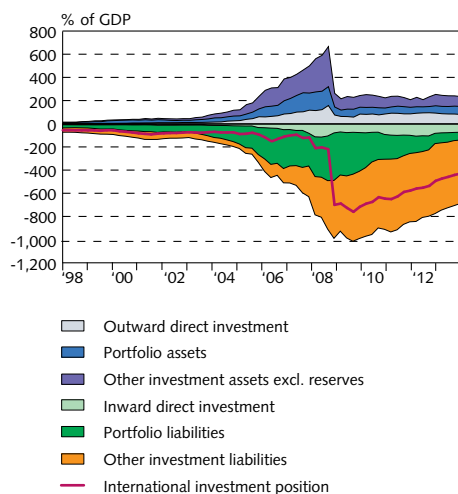


Chart 12
Net external debt position 1980-2013¹
At year-end

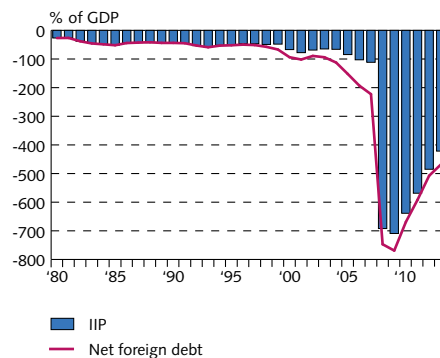
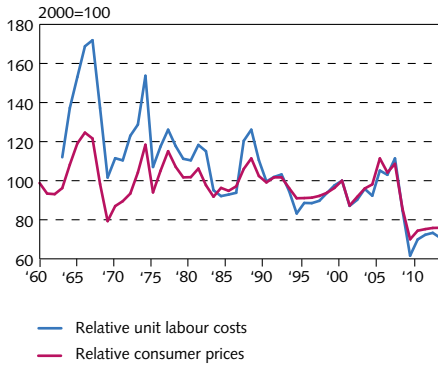
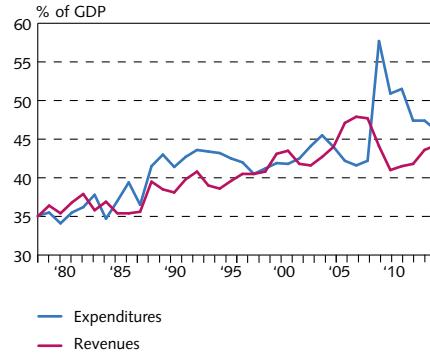


Chart 13
Real effective exchange rate of the Icelandic króna 1960-2013¹



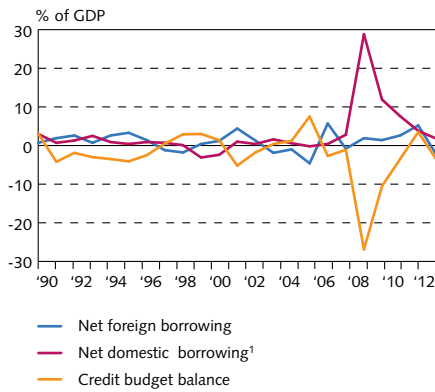
1. Preliminary 2013.
Source: Central Bank of Iceland.

Chart 14
General government revenues and expenditures 1978-2013



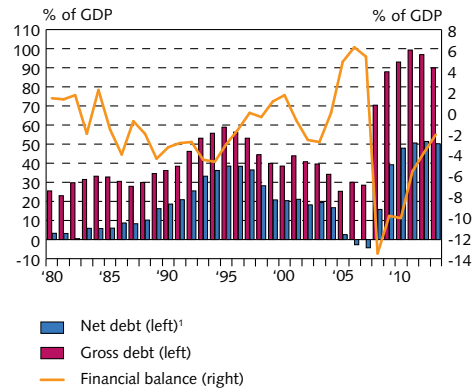
Source: Statistics Iceland.

Chart 15
Treasury borrowing and credit budget balance 1990-2012



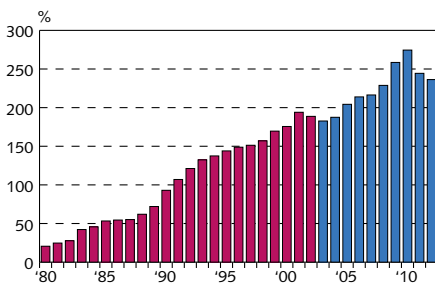
1. Including increase in pension fund commitments and outstanding long-term interest. State Accounting Office's preliminary calculations for 2012.
Sources: State Accounting Office, Statistics Iceland, Treasury accounts.

Chart 16
General government balance and debt 1980-2013



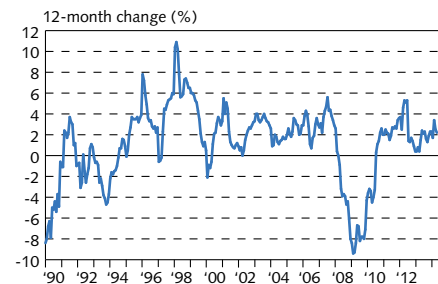
1. Debt excludes civil service pension liabilities. Assets include cash position but exclude equity holdings.
Sources: Statistics Iceland, Treasury accounts.

Chart 17
Household debt as percentage of disposable income 1980-2012¹



1. New classification from 2003 (blue columns). Estimate for 2012.
Sources: Statistics Iceland, Central Bank of Iceland.

Chart 18
Real wages January 1990 - March 2014



Source: Statistics Iceland.

Chart 19
Unemployment and labour participation
January 1996 - March 2014

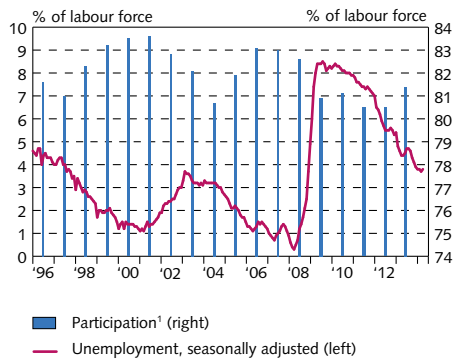


Chart 20
Short-term interest rates
March 1998 - April 2014
At month-end

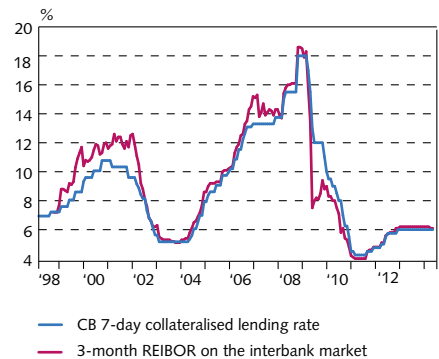


Chart 21
Long-term interest rates
January 1997 - April 2014
At end of month



Chart 22
Real yield and broad money 1960-2013¹
Real yield on non-indexed bank loans
and M3 as percent of GDP

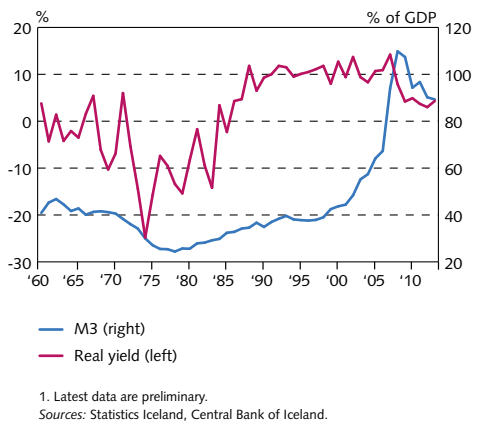


Chart 23
M3, DMB lending, and base money
January 1997 - March 2014¹

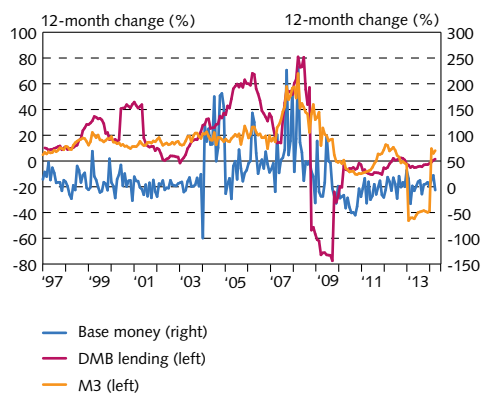


Chart 24
Deposit money bank lending by sector
January 1998 - March 2014¹

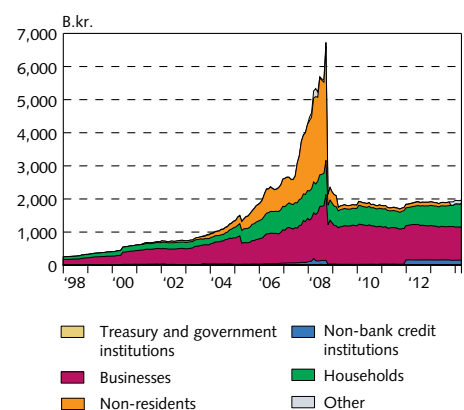
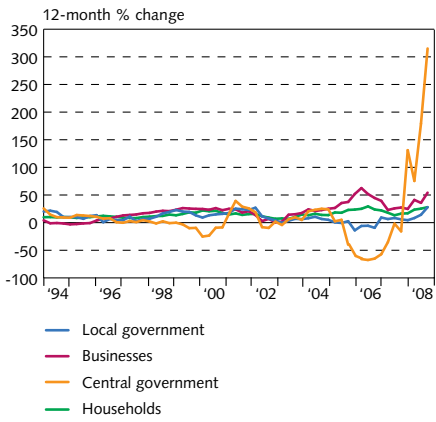
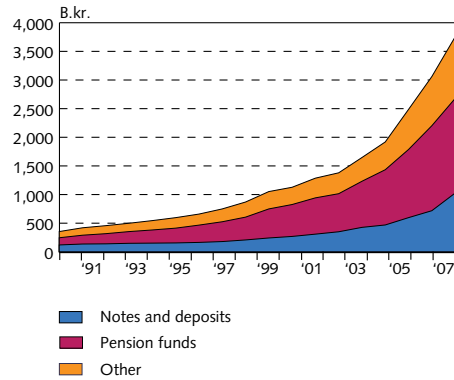


Chart 25
Growth of credit system lending
Q1/1994-Q3/2008
Lending by sectors¹



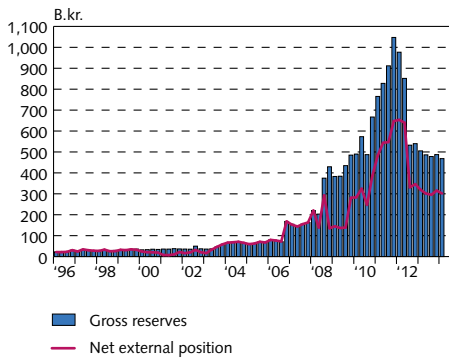
1. Reclassification of lending in September 2003 based on the ISAT-95 standard led to a reduction in household debt figures and an increase in businesses' and municipalities' debt figures. Latest figures are preliminary.
Source: Central Bank of Iceland.

Chart 26
Credit system liabilities at year-end 1990-2007
Balance at year-end at current prices



Source: Central Bank of Iceland.

Chart 27
Reserve assets and Central Bank net external position, Q1/1996 - Q1/2014¹
At current exchange rates



1. Latest data are preliminary.
Source: Central Bank of Iceland.